



Generate
Knowledge
Together



Empower
Engagement



Promote the
Use of Critical
Approaches



Depart from
Traditional
Solutions



Reshape the Future
of Environmental
Sustainability



Spark
Meaningful
Change

VOICE

Encouraging Citizen Engagement Using Artist-Led Innovation

Marta Coto

Project Coordinator
INOVA+

Email: marta.coto@inova.business

FOLLOW US ON

INSTAGRAM AND LINKEDIN!



INSTAGRAM



LINKEDIN



WEBSITE

INOVA+

waag futurelab


Royal College of Art
Postgraduate Art & Design

 **Future Focus21c**
Tooling up education for the 21c

 **Brunel**
University
London

 **RISE**
RESEARCH AND INNOVATION
SERVICES D O O



 **EURICE**
EUROPEAN RESEARCH AND
PROJECT OFFICE GMBH

www.voice-community.eu



Funded by
the European Union



UK Research
and Innovation

VOICE CONCEPT

The project is based on four pillars:

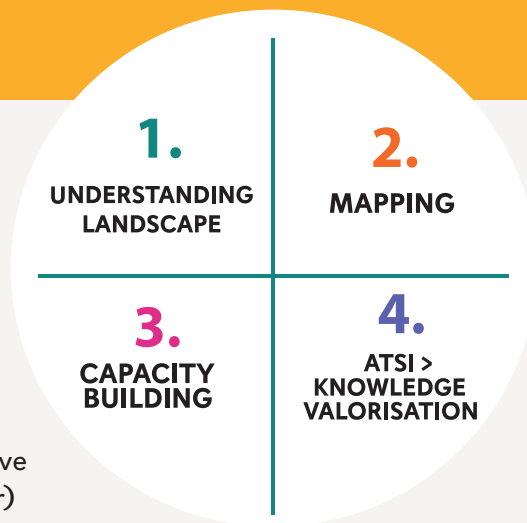
- (1) Understanding the landscape
- (2) Mapping
- (3) Capacity building
- (4) Arts-technology-society interactions (ATSI) for knowledge sharing.

Project team will gather information about communities, issues, stakeholders, and technologies using methods like the Inclusive Design Framework and permaCultural (pCr) resilience praxis. This foundation supports goals related to digital and green tools, community support, and adoption of new products and services.

Next, the project team will map projects and initiatives of consortium partners in Europe using digital tools to encourage knowledge sharing and community engagement.

VOICE integrates expertise into a collective repository for building skills and promoting sustainability. It fosters new literacy through interdisciplinary approaches and encourages participatory technology and solution design.

ATSI involves artists creating interventions based on community needs, sharing innovative practices, and generating project value.



IMPACT

Supporting the **growth of innovation** in a responsible manner/way.

Enabling open access to data, thereby facilitating broader utilization of research and innovation.

Exploring innovative approaches for **ensuring responsibility in research and innovation**, integrating arts and culture practices.

Shaping human capital, knowledge and skills towards **responsible innovation**.

Creating knowledge that fits the local area, **connecting EU goals with local issues** to create specific plans and rewards for responsible innovation.

Encouraging society to use research and innovation responsibly by allowing them the capability to do so.

Spreading knowledge and benefits through art, creativity, and culture as part of research and innovation.

Disseminating knowledge and ensuring **broader adoption of research and innovation**.

SPECIFIC OBJECTIVES USING SUSTAINABLE DEVELOPMENT GOALS



SDG11. Sustainable Cities and Communities

SDG 11 aims to make cities and human settlements inclusive, safe, resilient, and sustainable.



SDG12. Responsible Consumption and Production

SDG 12 calls for sustainable consumption and production patterns to reduce waste, conserve resources, and minimize environmental impact.



SDG13. Climate Action

SDG 13 emphasizes urgent action to combat climate change and its impacts.



SDG17. Partnership for the Goals

SDG 17 underscores the importance of global partnerships and cooperation to achieve the Sustainable Development Goals.